

INDUSTRIAL/WAREHOUSE  
FOR LEASE

# PacTrust Business Center

7245 SW Durham Road, Suite 190, Portland, OR 97224  
Building K



## Key Features



7,909 sq. ft. shell



1,138 sq. ft. office



5 dock doors

4 grade doors

1 oversized

---

22' clear height

---

LED lighting

---

Mezzanine storage

---

Ability for 53' trailers

---

Excellent access to I-5  
interchange

---

Adjacent to Bridgeport Village

---

Available May 2025

**Lease Rate (NNN):**

**\$0.90/sq. ft. shell**

**\$1.20/sq. ft. office**

**Jake Bigby**

jakeb@pactrust.com

**Caitlin Knecht**

caitlink@pactrust.com

503.624.6300

Owned & Managed by

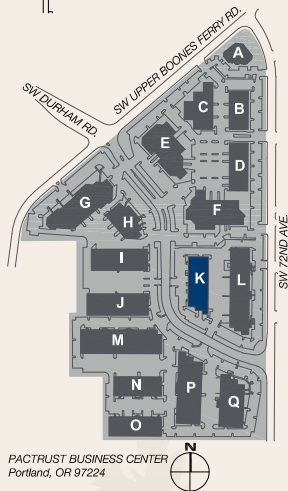
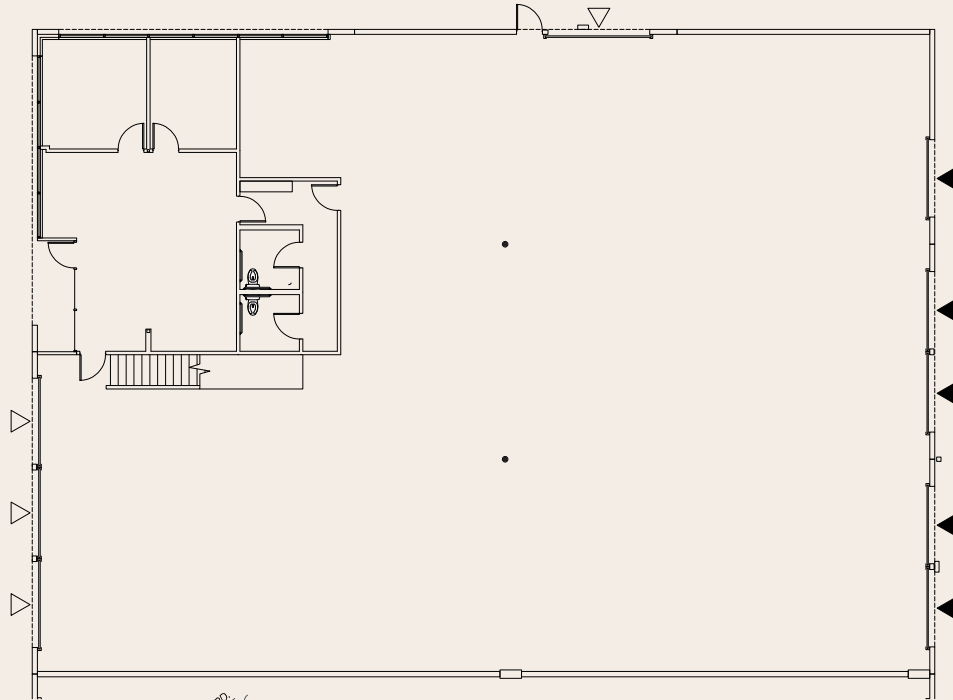
**PACTRUST**

© 2024 PacTrust. All information supplied herein, including but not limited to measurements, dimensions, and specifications, is deemed reliable but is not guaranteed and should be independently verified. Any reliance on the information contained herein is at the user's own risk.

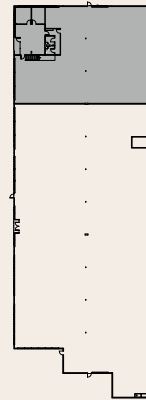
# Space Plan

7245 SW Durham Road, Suite 190, Portland, OR 97224

7,909 Sq. Ft.



- ▽ GRADE ACCESS
- ▼ DOCK ACCESS



**BUILDING PLAN**

**Jake Bigby**  
jakeb@pactrust.com

**Caitlin Knecht**  
caitlink@pactrust.com

503.624.6300  
www.PacTrust.com